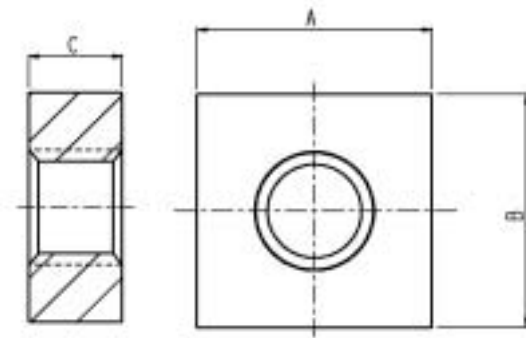


FLAT SQUARE NUTS

Square nuts

Recommended use:

These nuts, with reduced dimensional tolerances, are frequently used in profiled sections or cavities of all types. They are particularly well-suited for automated installation.



SCREW SIZE	REFERENCE	A	B	C	TIGHTENING TORQUE ** IN Nm (max)
M3	ECR 3827	8	8	2.7	0.8
M4	ECR 41040 SJ	10	10	4	1.9
M4	ECR 4827	8	8	2.7	1.9
M5	ECR 51040 ZB8	10	10	4	3.8
M6	ECR 61045 SJ	10	10	4.5	6.6
M6	ECR 61255 SJ	12	12	5.5	9.5
M8	ECR 81455	14	14	5.5	15.9

** Values obtained in the lab using a power screwdriver (at 400 rpm) on a hardened steel support with class 8.8 and 12.9 screws (non-lubricated and non-zinc plated).

NUT

MATERIAL	Steel
SURFACE TREATMENT	See table on cover flap, except for parts marked with reference " ": Zinc plating + green passivation
COLOUR	Yellow, or green in the case of reference " "